

Lerner
Newspapers



1921
1981



60 YEARS IN OUR LIVES



Wheeling, Buffalo Grove grow in different ways

ALTHOUGH THE TWO communities of Wheeling and Buffalo Grove are neighbors, they have grown in very different directions.

Wheeling has become a village of mainly multiple-family housing with a good industrial tax base, while Buffalo Grove remains primarily a single-family home community which is hungering for industry to relieve its homeowners of the burdens of higher taxation.

While Wheeling celebrated its diamond jubilee some years ago, Buffalo Grove was incorporated on March 7, 1958 and has already elected its first woman president. Wheeling elected its first woman trustee only four years ago and has yet to have a woman at its helm, although Trustee Sheila Schultz is trying for that position this April.

WHEELING GREW up along the Soo Line Railroad with its farmers sending produce to the city. Before long commuters also found their way back and forth and the farms gave way to subdivisions in the '50s.

Buffalo Grove's farms were owned by German Catholics who had come to the United States in the mid-1800s following the Napoleonic wars to escape difficult religious and economic conditions.

Buffalo Grove farmers also used the Soo Line to train their milk to Chicago, but sold a great deal of it to the cheese factory on Dundee Road built and oper-

ated by J.B. Weidner. When the factory went out of business, farmers either sold their milk to other local cheese factories or took it to the train for transport to the city.

THE AUTOMOBILE became a familiar site in the area when the state built the first concrete road in northern Illinois — Dundee Road.

When the land boom occurred in the mid-1950s, both Wheeling and Buffalo Grove mushroomed. Subdivisions like Dunhurst in Wheeling were built.

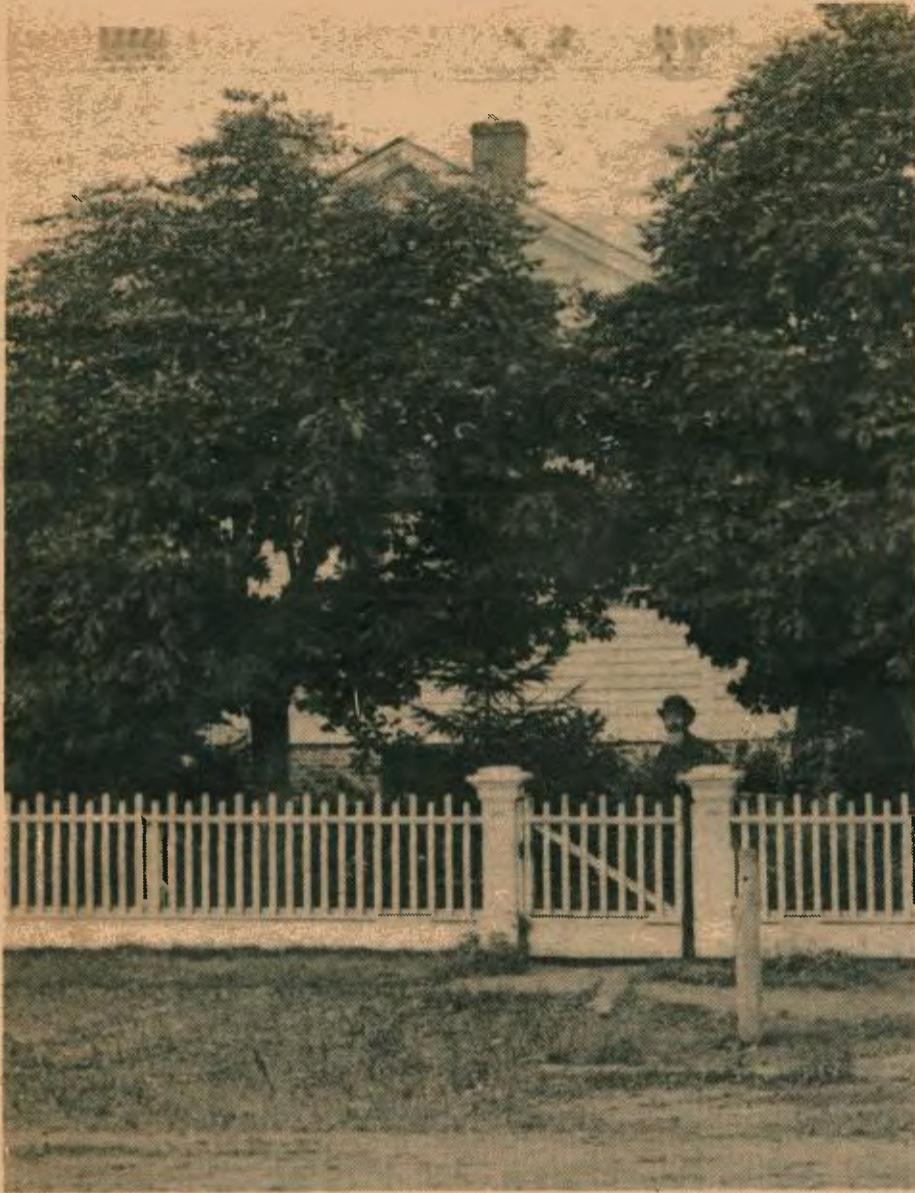
The Raupp farm of Buffalo Grove was sold to Albert Frank in 1957, the builder formed Buffalo Grove Homes, Inc., the forerunner of the construction boom which was to follow.

In 1979, when a special census was taken in each village, the populations of both towns had grown to about 22,000.

BECAUSE OF ITS varied types of housing, Wheeling attracts different types of people to the community. There are many Spanish-speaking people who live there now. In addition the young white-collar worker has also begun moving to Wheeling on his or her way up the ladder of success.

In Buffalo Grove, there are fewer apartments and condominiums and the community therefore attracts a more affluent person with a family.

Both communities are still experiencing growth, although Buffalo Grove (Continued on next page)



THIS IS THE old John Schneider house, located next door to the present Kiddie Kollege. Schneider was a veterinarian. Reinhardt or Reinholdt, Schneider's son, and then his daughter were both village clerk for about 50 years. The information comes from Ethel Widner.

THE MULTIPLEX REVOLUTIONIZES FITNESS IN THE 80's

Although perhaps the newest and finest fitness center in the area, the **Multiplex** is steeped in a history of "getting results" for those who want to get fit and stay fit. In February of 1979, the present management team of The Multiplex purchased the Nautilus at Deerfield Courts. To assure that



"Our Staff taking CPR lifesaving lessons from the Northbrook Fire Department."

proper Nautilus training principles were followed, our staff immediately flew to world Nautilus headquarters in Florida for training sessions in how to do Nautilus conditioning "Right" and we've been doing it "Right" ever since. Just thirty minutes,

2 to 3 times each week, under the trained "eyes" of our staff, has gotten results for literally hundreds of North Shore residents who wanted a fast and efficient way to get fit and stay that way.

In November of 1979, we got the idea that a combination of Nautilus body conditioning along with programs of running, swimming and aerobic exercise would not only provide better overall fitness results but would also create enough **Variety** to keep our clientele on their fitness programs more easily. So the Multiplex was born, and again in our effort to do it "Right", we hired an architectural firm specializing in track design to create our **Multiplex** track to NCAA standards with a surface that is both banked and cushioned to simulate running on firm earth.

Jogging is a joy in our year round controlled atmosphere, where you have ample room for individual movement in our four-36" wide lanes used for running, passing, jogging or walking from early morn to late evening. An archi-



"Nautilus Instruction."

tect specializing in pools designed our 60'x25' lap pool. Our exercise pool has four 6' plus lanes, each center tile is striped and divided by anti wake dividers. The water is kept at 80 degree F., an ideal temperature for doing exercise lap swimming. Enclosed in a room surrounded by glass on three sides sweeping 18 feet high, the pool provides a summer picture setting where our swim instructor

oversees a mile swim, a 1/2 mile swim and all sorts of aquatic water exercise sessions each morning, Monday through Friday.

Aerobic exercise has **not** been overlooked at the **Multiplex** either. To aid in cardiovascular conditioning, we have four trained instructors who teach 23 co-ed aerobic exercise classes each week. Our classes start with less challenging stretch and flex sessions and graduate to advanced aerobics, a super workout for those who are ready for it.

We present both a challenge and an encouragement to fitness at the **Multiplex**. We challenge you because of the rigors of our supervised programs and encourage you because of the beauty of our facility, its super functional qualities, and the supreme degree of variety it provides. Getting fit and

staying fit is tough but fun on our 3 complete lines of Nautilus progressive resistance equipment, in our pool, on our track, in our aerobic classes or by playing tennis, racquetball or handball at our complex. We also offer a whirlpool, saunas, steam, massage, nursery, Klaf's sunlight equipment, medical fitness testing, and coming soon, The Great Earth Vitamins.

As we said before, perhaps we're the newest in the fitness area on the North Shore, but after you see what we're doing at the **Multiplex**, you may say we're also the Best!



"An overhead view of CPR instruction with our Lounge & Pool in the background."

Come in to see the Multiplex today.

THE MULTIPLEX, 491 Lake-Cook Plaza, Deerfield • (312) 498-4030

(Continued from preceding page)

has more potential as far as growth into Lake County. While Wheeling has remained mostly a Cook County community, Buffalo Grove has spread out into Lake County and is still growing there.

The school population in Wheeling is shrinking, like its sister communities to the east, but in Buffalo Grove, two school districts have built new schools in the past year.

The Wheeling Park District has a definite advantage in having been formed in a time when taxpayers were willing to accept an extra burden to have additional parks, a pool and a golf course. The Buffalo Grove Park District is little more than a decade old and has had to fight for every inch of land it owns. The golf course in this community is owned by the village, rather than the park district, although voters did approve a referendum last year to condemn and purchase a piece of property adjacent to the major park in the community.

Both communities are history minded and have historical societies which work hard to preserve any landmarks in the community. In Wheeling, the historical society was joined with the park district a couple of years ago, but in Buffalo Grove, it is still an independent organization.

Although adjacent to one another, the people of Wheeling and Buffalo Grove do not consider themselves akin to one another and only through inter-governmental cooperation in groups like the Northwest Municipal Conference do the communities seem to get along.



SOUTH MILWAUKEE AVENUE IN Wheeling looked like a scene from the Old West around the turn of the century.

WE SPEAK YOUR LANGUAGE

- Full depository services — Savings — Checking — Certificates — Now Accounts
- Full Draft Services — Foreign travelers checks
- Installment, Real Estate, Commercial Loans
- Money orders, Cashiers checks, Gift checks
- Individual Retirement Accounts
- Safety Deposit Boxes;
- Night Depository

Open 6 Days a Week
To Serve Your Financial Needs



Buffalo National

BUFFALO GROVE NATIONAL BANK

555 W. Dundee Road, Buffalo Grove, Illinois 60090



398-1515

